



Residential real estate / Houses and villas / Costa del Maresme / Premia de Dalt

House in Premia de Dalt

Premia de Dalt, Costa del Maresme

986000 €

REF
MSM52

AREA
436 m2

BATHROOMS
5

ROOMS
4

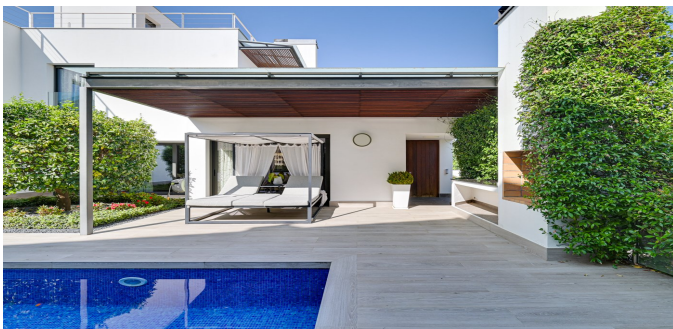


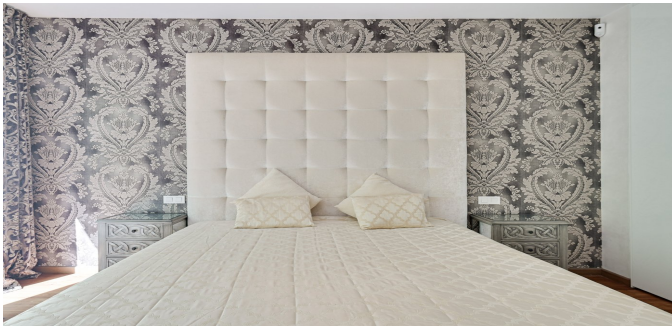
[VIEW ON WEBSITE](#)

House in Premià de Dalt

Spectacular modern house with sea views in Premià de Dalt This impressive 436 m² house, located on a 500 m² plot, has been completely renovated between 2022 and 2023, offering contemporary style and exceptional comfort. With a privileged location, enjoy panoramic views of the sea and mountains, combining tranquility and natural beauty. The property has 4 large bedrooms, each designed for maximum privacy and comfort, and 5 modern bathrooms, ideal for a family or those who want generous spaces to entertain guests. Equipped with gas underfloor heating, air conditioning and a state-of-the-art insulation system, the house guarantees comfort in all seasons. The spacious kitchen and living areas open onto an outdoor area that includes a private pool, perfect for relaxing on sunny days. The property also has a storage room, sauna, and a garage with capacity for two cars. In addition, the roof is prepared for the installation of solar panels, offering the possibility of implementing sustainable and efficient solutions. Located a few minutes from services, international schools and the best beaches in the area, this house is ideal for those looking for an exclusive residence with all the comforts. It is sold fully furnished and with the option to pay in different currencies, making the process easier for international buyers. Don't miss the opportunity to visit this architectural gem and discover your next home!

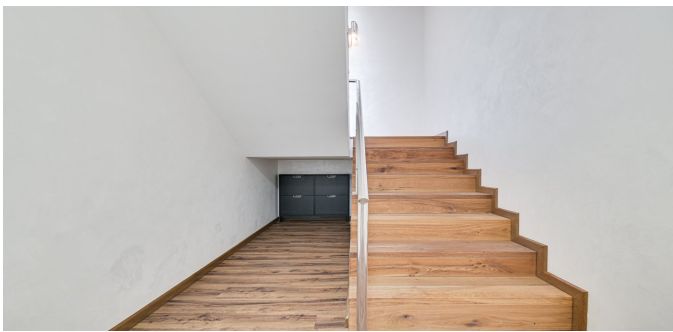
[VISIT WEBSITE](#)

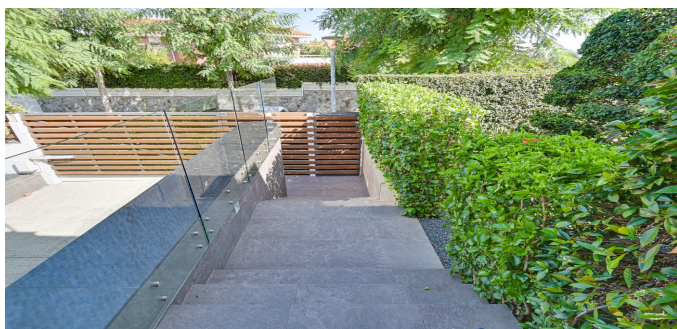
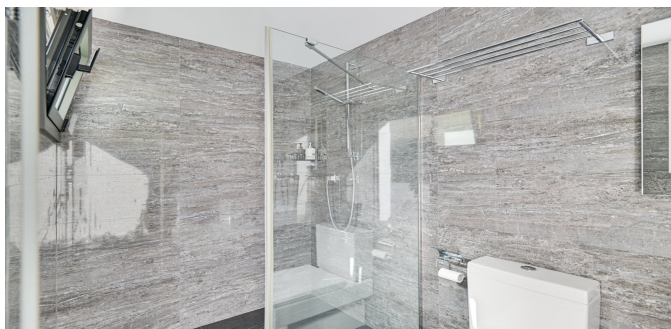


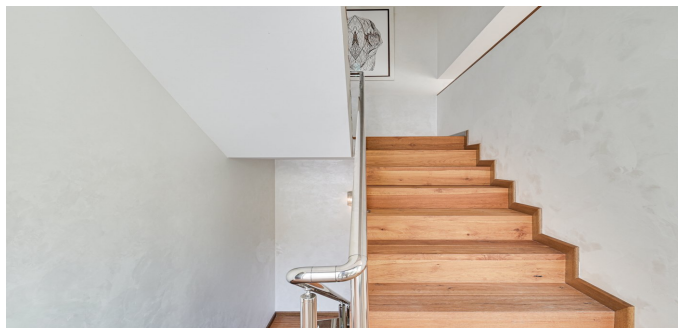
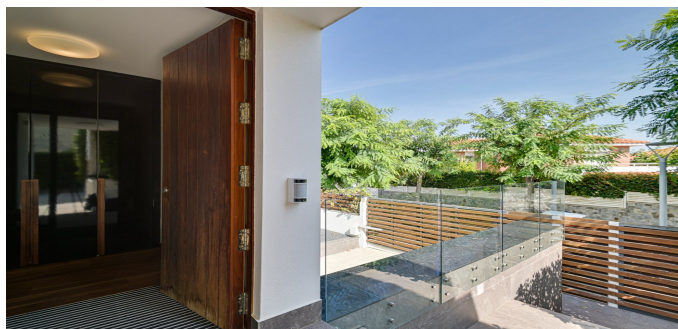














Ronda Sant Pere 21, 1/3, Plaza Urquinaona), Barcelona, 08010
+34 932 205 680

Avinguda Vila de Blanes 135, local 4, Lloret del Mar, 17310
+34 872 585 017

office@estate-barcelona.com



VISIT WEBSITE

